

MISSISSIPPI BAND OF CHOCTAW INDIANS



CHOCTAW HEALTH CENTER
TRIBAL PUBLIC HEALTH ACCREDITATION

HALITO!



OUTLINE

- PUBLIC HEALTH ACCREDITATION COMMITTEE
- MISSISSIPPI BAND OF CHOCTAW INDIANS OVERVIEW
- BEGINNING JOURNEY - PLANNING COMMUNITY HEALTH ASSESSEMENT
- RELATIONS WITH STATE OF MISSISSIPPI PUBLIC HEALTH
- CHALLENGES AND SUCCESSES

PUBLIC HEALTH ACCREDITATION

...

COMMITTEE

Public Health Accreditation Committee

Purpose:

In support of the Choctaw Health Center's mission, the Public Health Services Department's purpose is to enable members of the MBCI to achieve optimal health by improving each individual's knowledge; attitudes, and practices about health by promoting, supporting, and assisting the Choctaw Health Center with Health care delivery at the community level.



MISSISSIPPI BAND OF CHOCTAW INDIANS

...

OVERVIEW

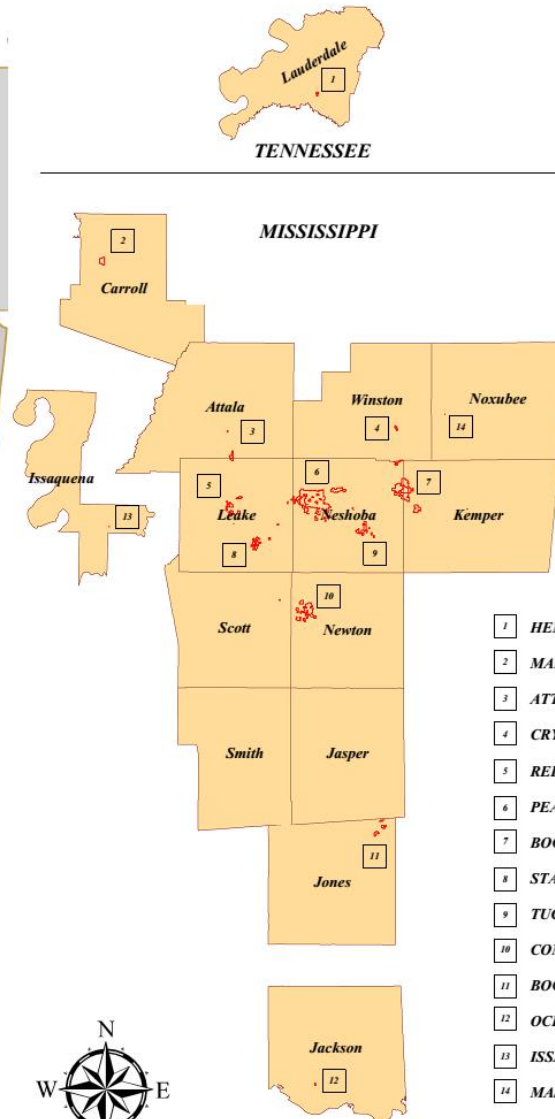
A History

- **THE CHOCTAWS CALLED THE SOUTHEAST HOME FOR MANY CENTURIES.**
- **FIRST MENTION OF CHOCTAW WAS RECORDED IN MODERN HISTORY IN 1675.**
- **THE MISSISSIPPI BAND OF CHOCTAW INDIANS WAS OFFICIALLY RECOGNIZED BY THE FEDERAL GOVERNMENT IN 1945.**

Historical Photographs



MISSISSIPPI BAND OF CHOCTAW INDIANS

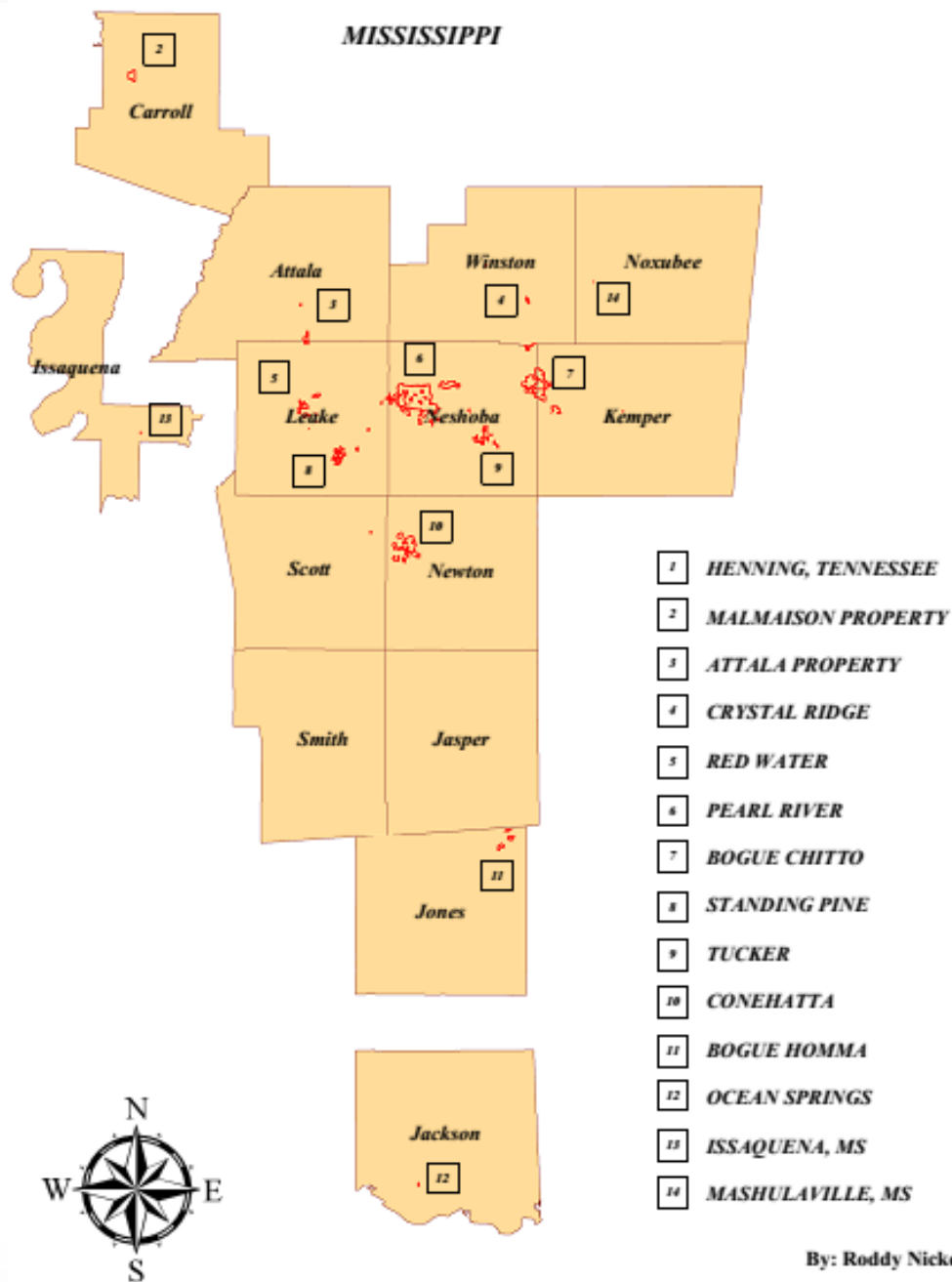


- 1 HENNING, TENNESSEE
- 2 MALMAISON PROPERTY
- 3 ATTALA PROPERTY
- 4 CRYSTAL RIDGE
- 5 RED WATER
- 6 PEARL RIVER
- 7 BOGUE CHITTO
- 8 STANDING PINE
- 9 TUCKER
- 10 CONEHATTA
- 11 BOGUE HOMMA
- 12 OCEAN SPRINGS
- 13 ISSAQUENA, MS
- 14 MASHULAVILLE, MS



Reference Only

By: Roddy Nickey



By: Roddy Nickey

MBCI FACTS

- Tribal enrolled membership exceeds 10,800 individuals
- Tribal government is a democratic form of government: Legislative, Executive, and Judicial.
- Tribe owns and operates a diversified portfolio of manufacturing, service, retail, hospitality and construction enterprises.
- Choctaw language is still spoken fluently in majority of homes.





Choctaw Health Center

ALWAYS MOVING FORWARD!

Pearl River Reservation is now home to a new state-of-the-art health facility. The newly completed Choctaw Health Center encompasses a 36-room outpatient department, a 18-chair dental department, six treatment rooms (two equipped for trauma), an emergency department, emergency medical services, various treatment facilities, behavioral health and public health services, along with all necessary support services.

The new hospital is over twice the size of the current hospital, which opened its doors in 1976.



Rural Health Clinic Hours

Monday - Thursday
8:00a - 6:00p all clinics open

Rotating clinic hours on Saturdays
8:00a - 12:00p

1st Saturday of the month - Conehatta Clinic

2nd Saturday of the month - BogueChitto

3rd Saturday of the month - Red Water

4th Saturday of the month - Choctaw Health Center

Bogue Chitto
601-656-5442

Conehatta
601-775-3446

Red Water
601-267-8368





CHC MISSION

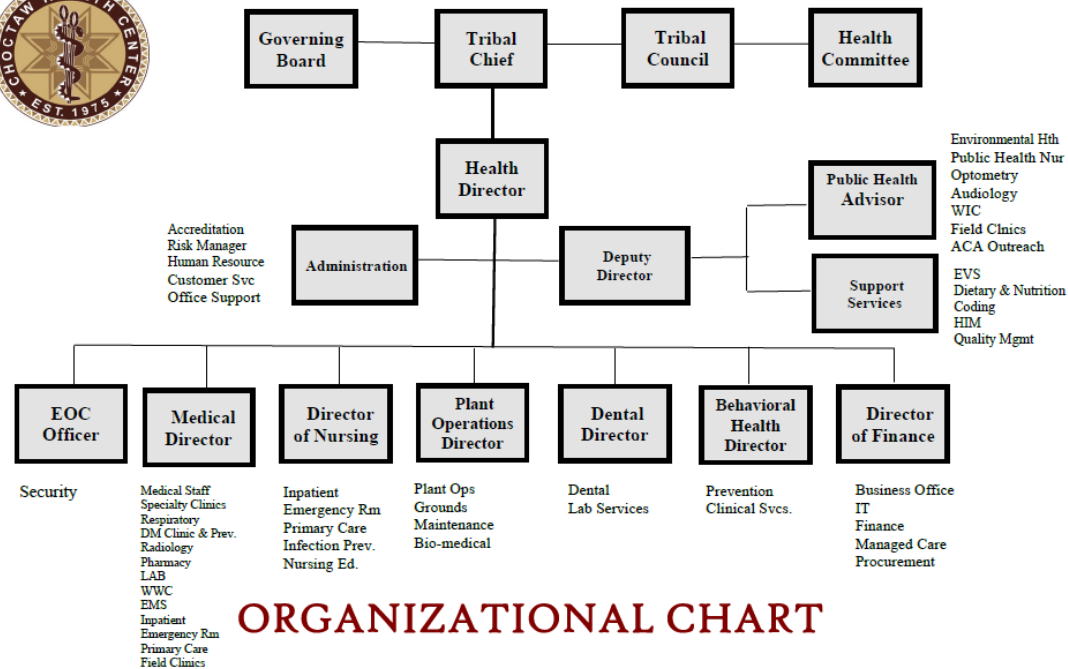
The Mission of the Choctaw Health Center is to raise the health status of the Choctaw people to the highest level possible.

CHC VISION

Our vision is to achieve a healthy community through holistic health services in a culturally sensitive environment, in partnership with satisfied customers, dedicated employees, and the Choctaw community.



Organizational Chart



BEGINNING JOURNEY

• • •
PLANNING FOR HEALTH
ASSESSMENT

CHA Planning

- Community definition
 - All persons eligible for MBCI health services
 - Enrolled MBCI members or members of other federally recognized American Indian and Alaska Native and direct lineal descendants.
 - Living 'on' or 'near' Tribal lands considered as Choctaw Community
 - Past or current direct service users of Choctaw Health Center



Engaging Partners

- Invitation to introduction/open discussion on MBCI health status and interests
- Asked to complete a short questionnaire
- Working meetings with Community Health Technicians (CHTs)
- Participation with Mississippi State Health Assessment and Improvement Committee (SHAIC)

Questionnaire

- Used to:
 - Distinguish primary health concerns of partners
 - Locate potential data sources
 - Generate and promote discussion

MBCI Accreditation – Partner/Stakeholder Questionnaire

Name: _____ Email: _____

Phone Number: _____

Are you willing to assist with MBCI public health accreditation? (Circle one)

Yes No

What department/field do you work in and what is your job title?

What data resources do you have access to that can contribute to creating a snapshot of health within the Tribe? (Ex. Demographics, mortality rates, disease prevalence, etc.)

What would you like to get out of this partnership?

Which MBCI community do you reside in? (If applicable)

List your top three health concerns for the tribe

1. _____

2. _____

3. _____

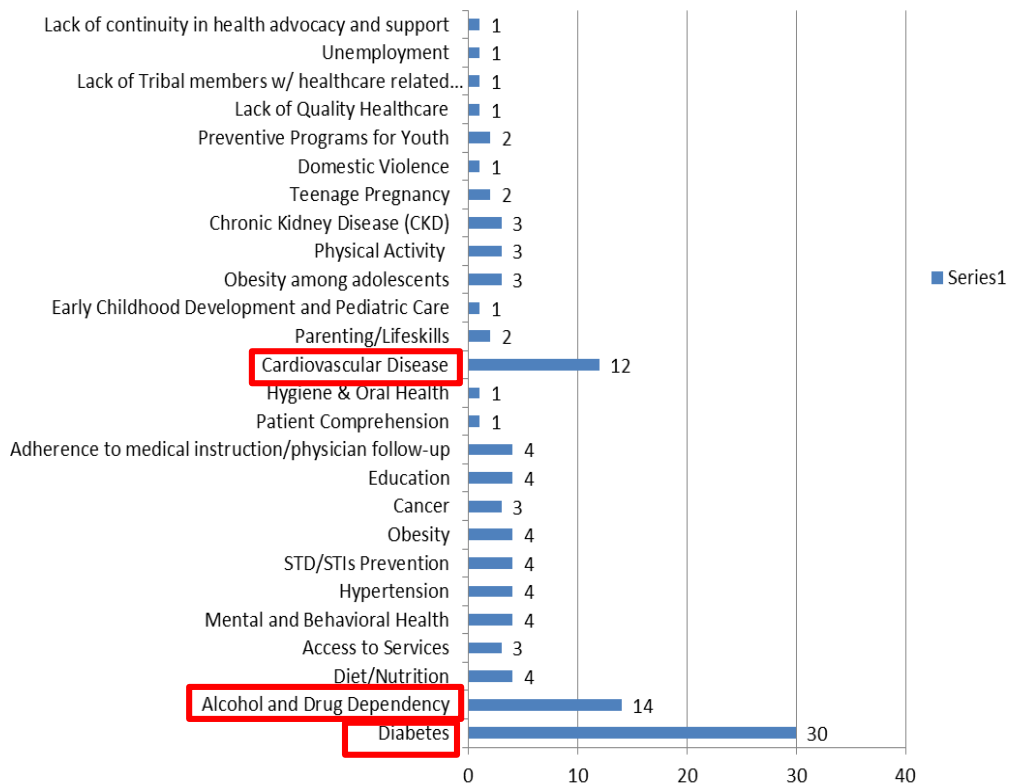
What do you think we can do to improve the health of the MBCI communities?

What day and time of the week are you available to attend sponsor/stakeholder meeting?

Please return to the Public Health Department of the Choctaw Health Center

Questionnaire Results

Top Health Concerns Among Partners



- 39 questionnaires collected
- 77% noted diabetes to be one of their top health concerns
- 36% noted alcohol and drug dependency to be one of their top health concerns
- 31% noted cardiovascular disease to be one of their top health concerns

STATE OF MISSISSIPPI PUBLIC HEALTH

...

RELATIONSHIP

Survey Development

- Assistance from partners
 - Mississippi State Department of Health
- Guidance from other survey instruments
 - BRFSS, NHANES, NACCHO, State CHA, EBCI
- Working meetings with Community Health Technicians
 - Recommended and developed questions that are appropriate for and can be easily understood by community members

PUBLIC HEALTH ACCREDITATION COMMITTEE

...

CHALLENGES AND SUCCESSES

Challenges

- Locating reliable data sources
- Getting questionnaires back from partners who could not attend meetings or working in other communities
- Invitation of partners located in other communities
- Staff/consultant drawback

Successes

- Developed a working relationship with state health public health department
- Obtained buy-in from administration and tribal leadership
- Improved staff knowledge on public health accreditation
- Promoted community engagement by fostering partnership opportunities
- Began important groundwork for accreditation

Implications

- Sustain and improve engagement with partners and community
- Finalize and implement survey instrument
- Identifying areas where we should seek training
- Pursue training opportunities for community health and outreach staff.

Acknowledgements

- NIHB
- Karrie Joseph
- Mississippi State
Department of Health
- CDC Public Health
Associate Program



References

- <http://www.choctawhealthcenter.org>
- <https://www.google.com/search?q=mississippi+band+of+choctaw+indians>
- Mississippi Band of Choctaw Office of Public Information – Tribal Profile
- www.CHOCTAW.org
- Jesse Thomas, P.H. Advisor; jesse.thomas@choctaw.org
- Denise B. John, Public Health Dir.; djohnrn@choctaw.org
- Jessica Pettway, P.H.Associate; jessica.pettway@choctaw.org
- Durnene Farmer, Outreach Dir.; durnene.farmer@choctaw.org
- Sharon Hockett, P.H. Nurse; sharon.hockett@choctaw.org
- Jordon Taylor, Environ. Health; jordon.taylor@choctaw.org

YAKOKI!

TILL NEXT TIME

